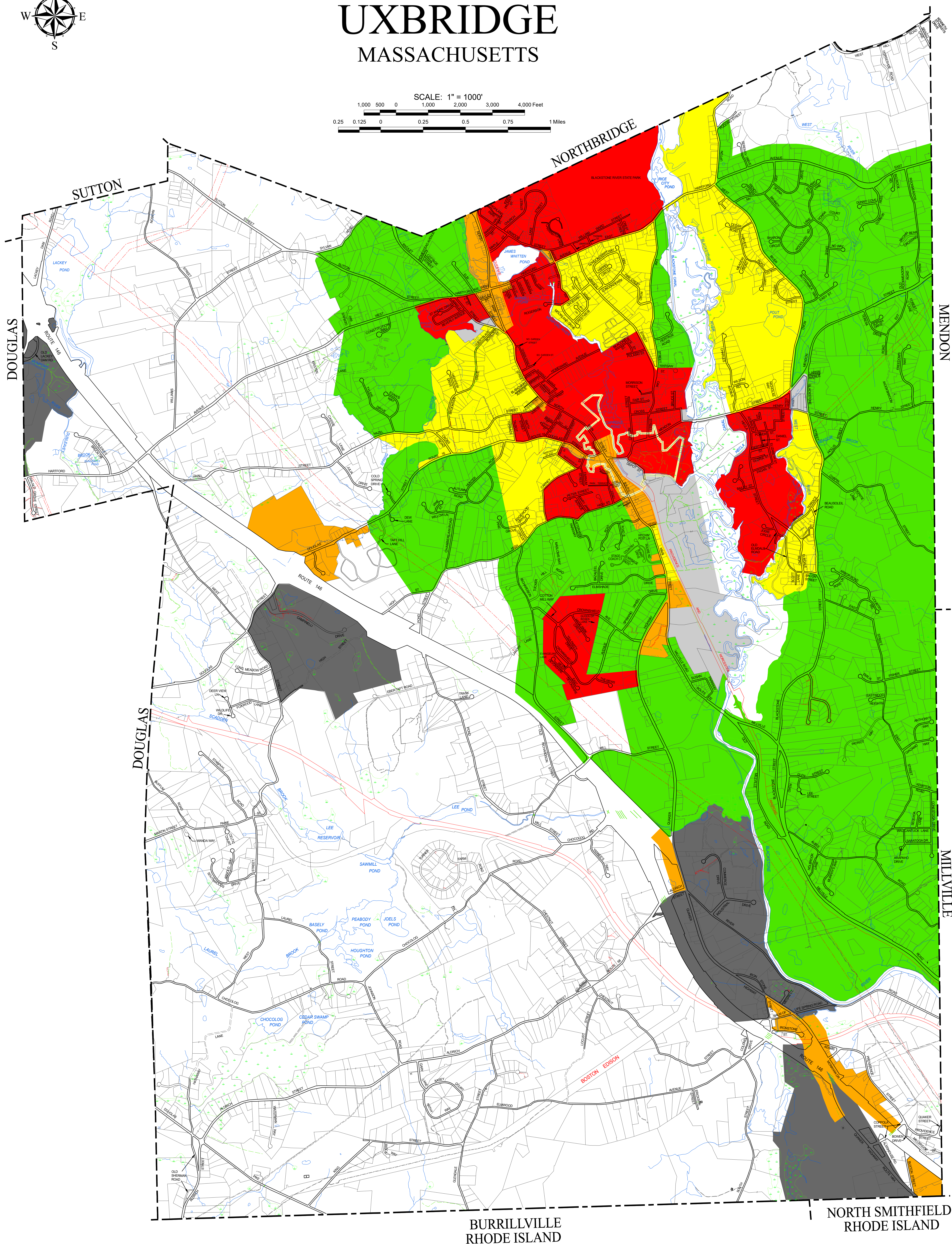


ZONING MAP OF UXBRIDGE MASSACHUSETTS

SCALE: 1" = 1000'
1,000 500 0 1,000 2,000 3,000 4,000 Feet
0.25 0.125 0 0.25 0.5 0.75 1 Miles



NOTES

THIS MAP IS BASED ON THE TOWN OF UXBRIDGE, MASSACHUSETTS PROPERTY MAPS PREPARED IN 2003 BY CAI TECHNOLOGIES. IT IS INTENDED FOR REFERENCE AND PLANNING PURPOSES ONLY.

ZONING SOURCE DATA:
MASSACHUSETTS GIS ZONING DISTRICTS CURRENT TO 1999.

ZONING UPDATES:
ARTICLE 1: SPECIAL TOWN MEETING (JUNE 29, 2000)
ARTICLE 11: FALL ATM (NOVEMBER 18, 2003)
HISTORIC DISTRICT ADDED 2005
ARTICLE 17: MEETING NOV 15, 2005
ARTICLE 12: MEETING JUNE 20, 2006
ARTICLE 20: MEETING NOV 20, 2007
ARTICLE 30: MEETING MAY 13, 2008
ARTICLE 11: FALL ATM (2011)
ARTICLE 18: 19 FALL ATM (NOVEMBER 20, 2012)
ARTICLE 21: FALL ATM (2017)

PROPERTY LINES CURRENT TO JANUARY 1, 2019

LEGEND

- PROPERTY LINE
- IN CONTENTION
- TOWN LINE
- ROAD
- SECONDARY ROAD
- PRIVATE ROAD
- RIGHT OF WAY
- TRAIL
- WATER
- WETLAND
- RAILROAD
- UTILITY

ZONING

- AGR - Agricultural
- BUS - Business
- INDA - Industrial A
- INDB - Industrial B
- RESA - Residential A
- RESB - Residential B
- RESC - Residential C
- Historic

PRODUCED BY
CAI Technologies
Precision Mapping. Geospatial Solutions.
11 PLEASANT STREET, LITTLETON, NH 03561
800.322.4540 - WWW.CAI-TECH.COM