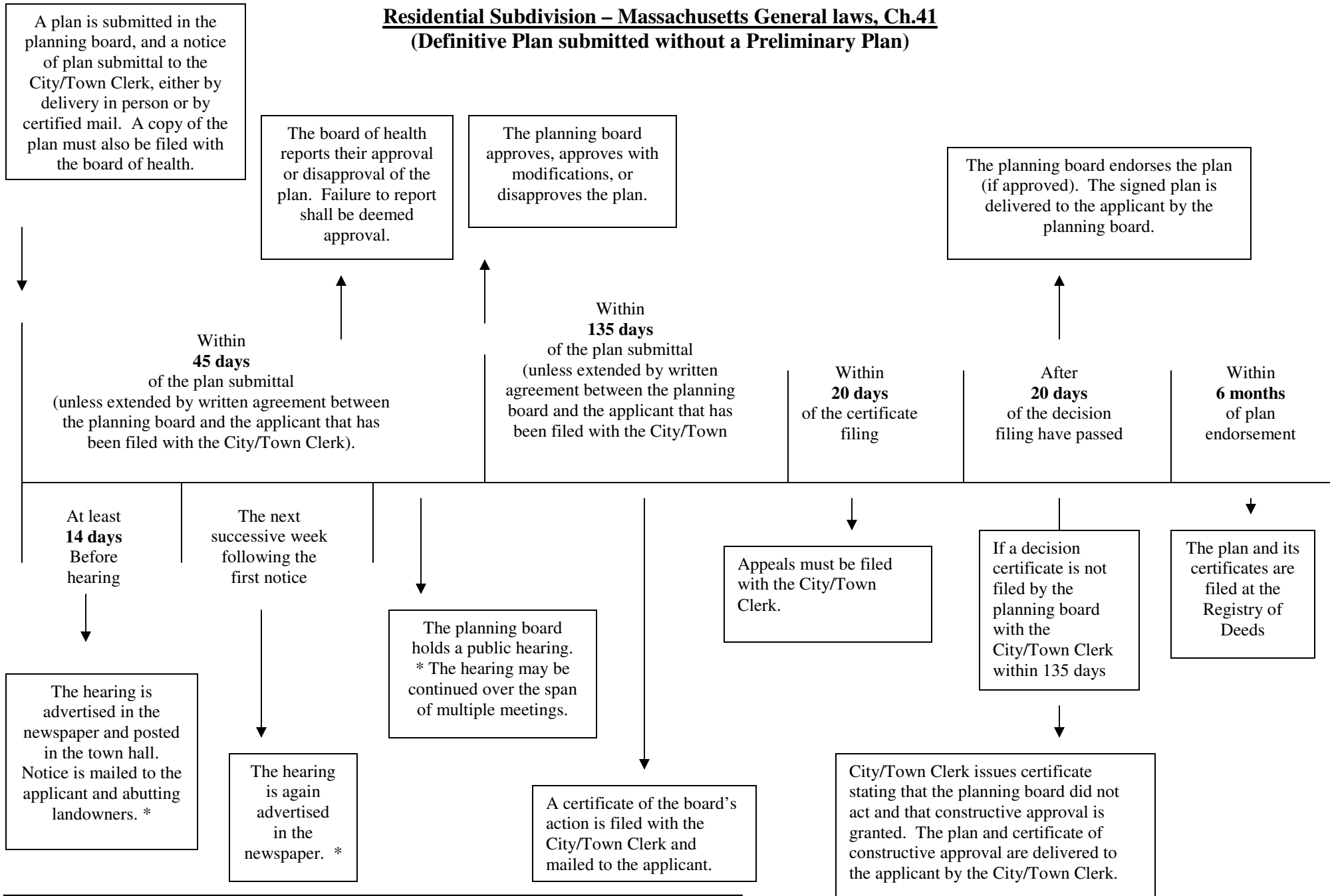


Residential Subdivision – Massachusetts General laws, Ch.41
(Definitive Plan submitted without a Preliminary Plan)



Disclaimer: Developed as an informal guide for permit agencies with information current as of January 2008. It has been transmitted for informational purposes only, and its content should not be construed as legal advice. Please consult legal counsel before taking any action on this information. Please consult MGL.C41 for more detailed information.

* = at the expense of the applicant