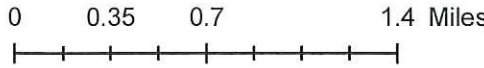
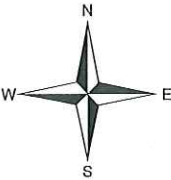


Municipal Vulnerability
Preparedness (MVP)
Workshop: Uxbridge

Reference Map:
Ortho

- Legend
- Massachusetts Towns
 - Major Roads
 - Local Roads
 - Water Bodies
 - Streams



Information depicted on this map is for planning purposes only. This information is not adequate for legal boundary definition, regulatory interpretation, or parcel-level analysis. Use caution interpreting positional accuracy.

Produced by the Central Massachusetts Regional Planning Commission.
1 Mercantile Street, Suite 520, Worcester, MA 01608
Visit us on-line at - <http://www.cmrpc.org>

Date: 9/12/2018

R:\Pre-Disaster Mitigation\MVP

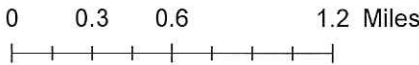
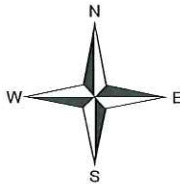


Municipal Vulnerability Preparedness (MVP) Workshop: Uxbridge

21E, Soil Dump Sites & Landfills

Legend

- Massachusetts Towns
- Roads
- 21E Tier Classified Sites
- Landfills
- Soil Dump Sites
- Water Bodies
- Streams
- 100-year Flood Area
- 500-year Flood Area
- Aquifers

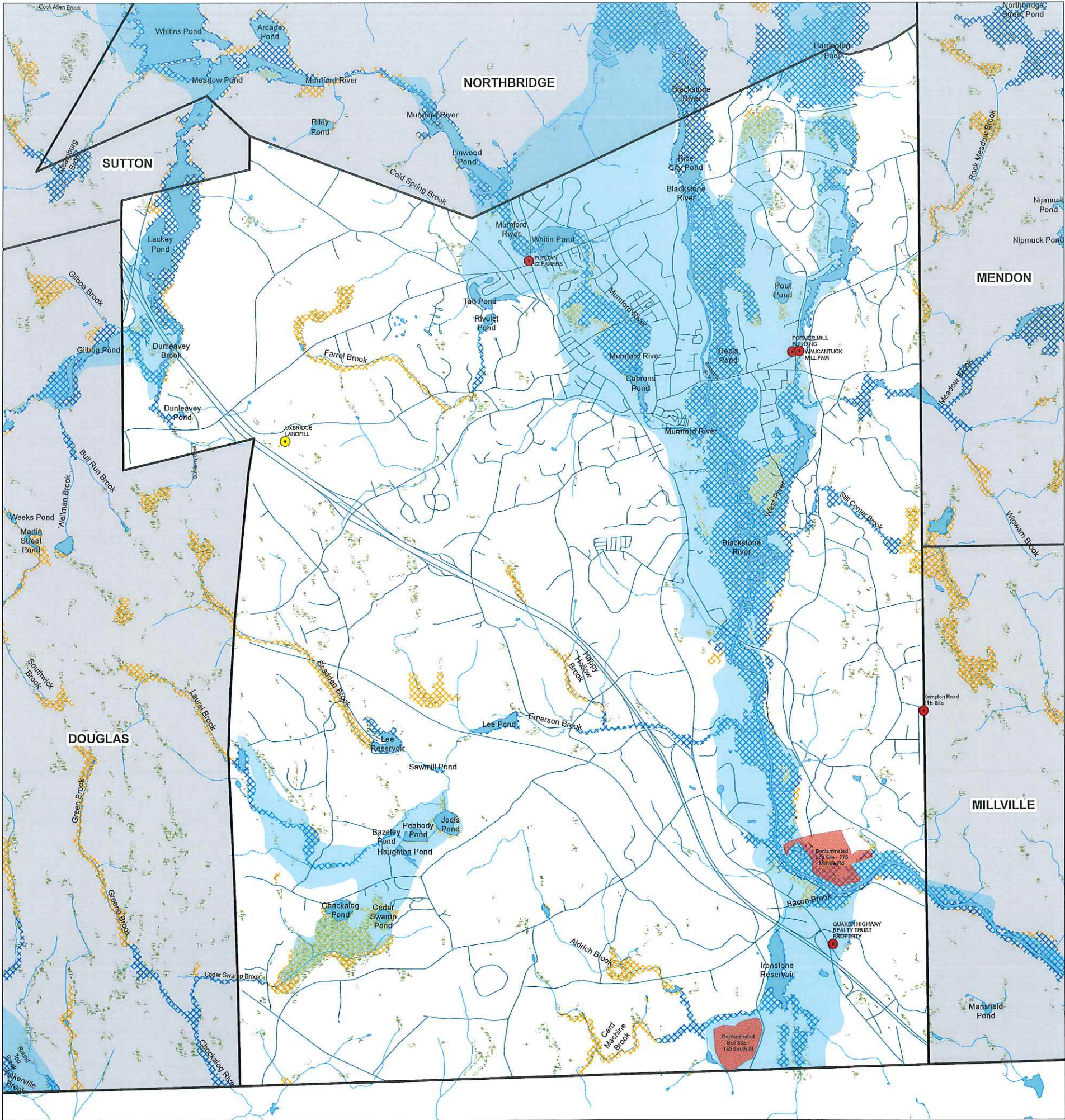


Flooding data source: FEMA's Digital Flood Insurance Rate maps (DFIRM). Other data sources include: MassGIS, MassDOT, and CMRPC. Information depicted on this map is for planning purposes only. This information is not adequate for legal boundary definition, regulatory interpretation, or parcel-level analysis. Use caution interpreting positional accuracy.

Produced by the Central Massachusetts Regional Planning Commission. 1 Mercantile Street, Suite 520, Worcester, MA 01608. Visit us on-line at - <http://www.cmrpc.org>

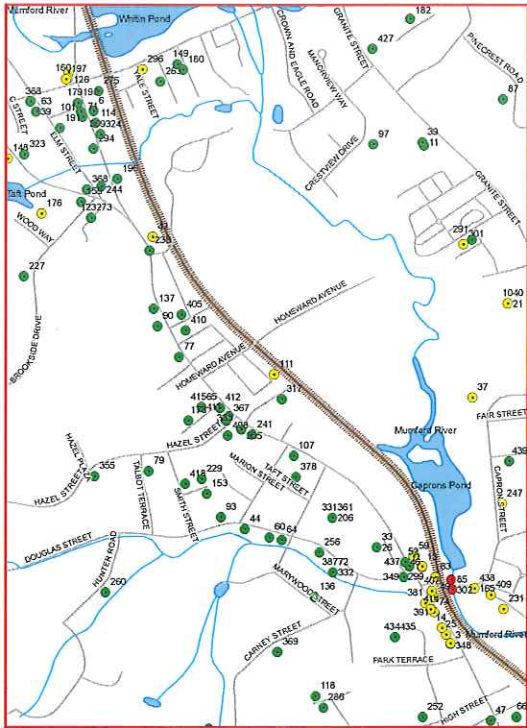
R:\Pre-Disaster Mitigation\MVP

Date: 9/6/2018



Municipal Vulnerability Preparedness (MVP) Workshop: Uxbridge

Businesses, 40B Housing & Non-Businesses



Legend

Businesses & Non-Businesses

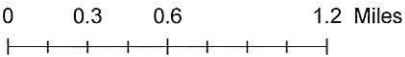
- Not in Flood Plain
- 100yd from Flood Plain
- Within Flood Plain

Water Network Structure

- 40B Housing
- Roads
- Active Service Railroads

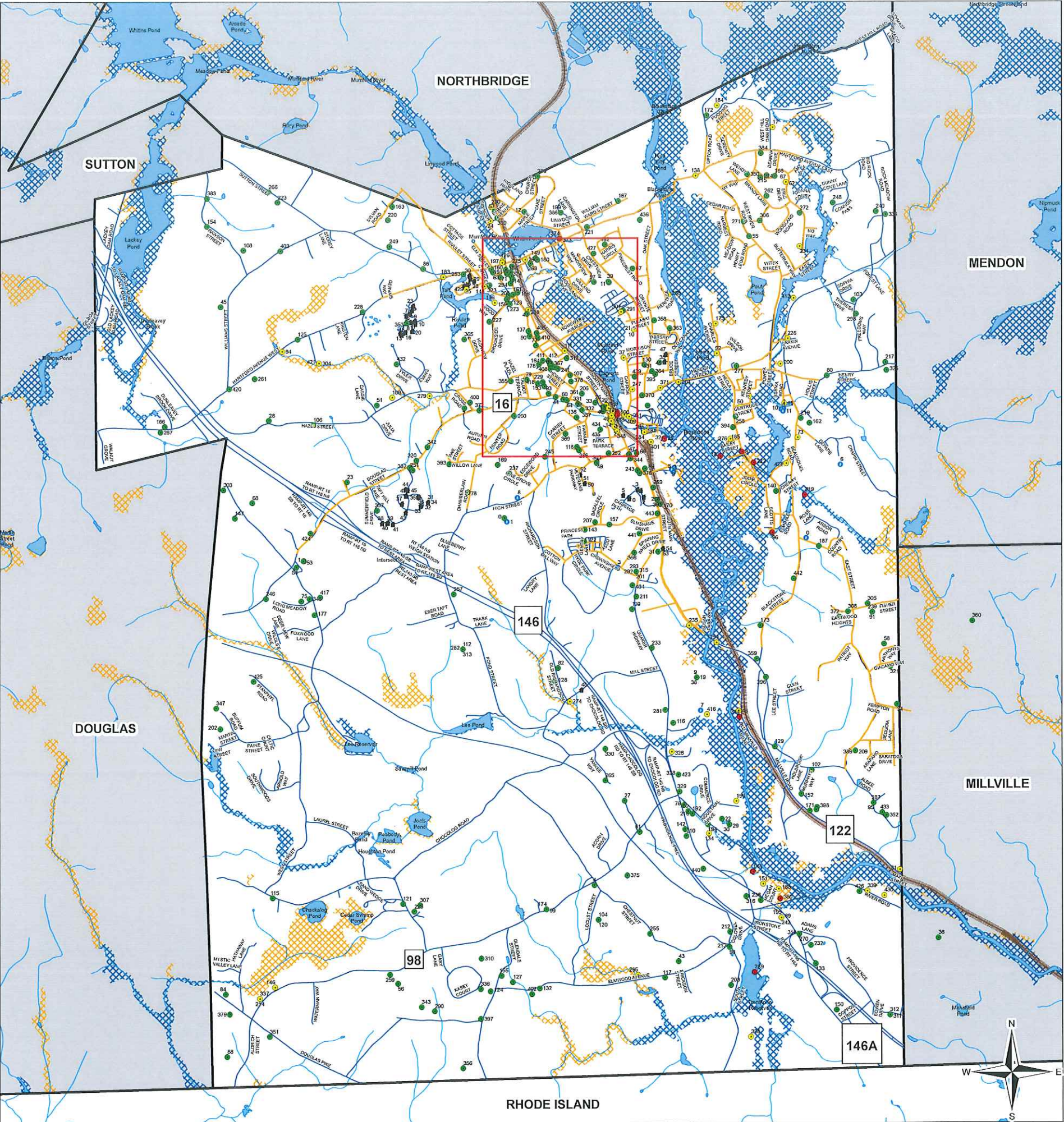
Massachusetts Towns

- Streams
- Water Lines
- Water Bodies
- 100-year Flood Area
- 500-year Flood Area



Flooding data source: FEMA's Digital Flood Insurance Rate maps (DFIRM). Other data sources include: MassGIS, MassDOT, and CMRPC. Information depicted on this map is for planning purposes only. This information is not adequate for legal boundary definition, regulatory interpretation, or parcel-level analysis. Use caution interpreting positional accuracy.

Produced by the Central Massachusetts Regional Planning Commission, 1 Mercantile Street, Suite 520, Worcester, MA 01608. Visit us on-line at - <http://www.cmrpc.org>

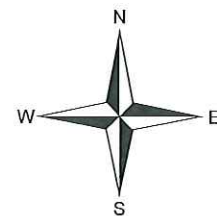


Municipal Vulnerability Preparedness (MVP) Workshop: Uxbridge

Forests
&
Farmland

Legend

-  Massachusetts Towns
-  Roads
-  Active Service Railroads
-  Farmland (MassGIS 2005)
-  Forest (Audubon 2013)
-  Water Bodies
-  Streams
-  Uxbridge Water



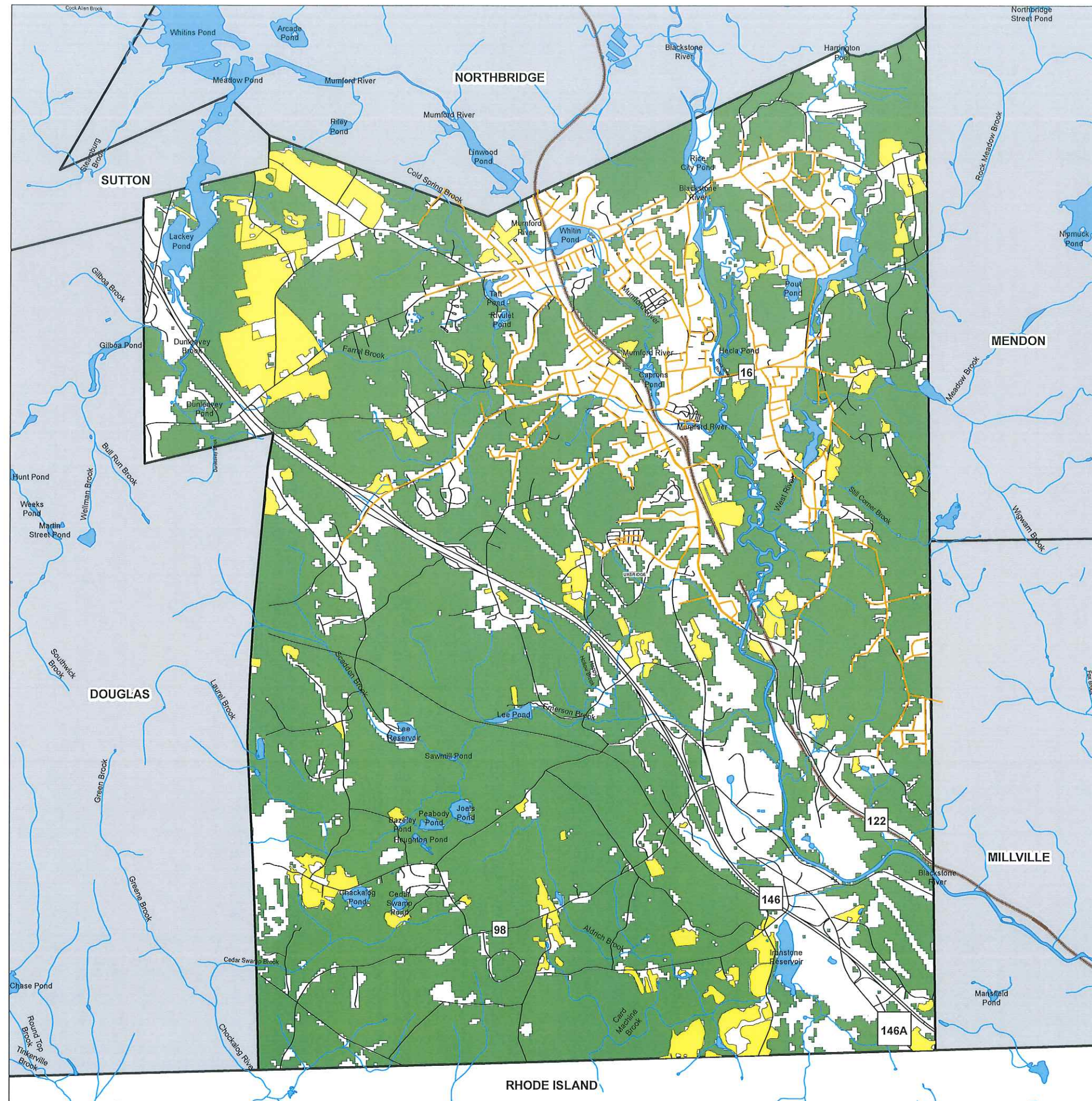
0 0.3 0.6 1.2 Miles

Flooding data source: FEMA's Digital Flood Insurance Rate maps (DFIRM). Other data sources include: MassGIS, MassDOT, and CMRPC. Information depicted on this map is for planning purposes only. This information is not adequate for legal boundary definition, regulatory interpretation, or parcel-level analysis. Use caution interpreting positional accuracy.

Produced by the Central Massachusetts Regional Planning Commission, 1 Mercantile Street, Suite 520, Worcester, MA 01608. Visit us on-line at - <http://www.cmrpc.org>

R:\Pre-Disaster Mitigation\MVP

Date: 9/6/2018



Municipal Vulnerability Preparedness (MVP) Workshop: Uxbridge

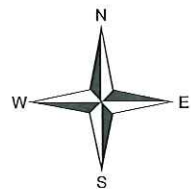
Reference Map: Zoning

Legend

- Massachusetts Towns
- Roads
- Tax Parcels (M304)

UxbridgeZoning

- COMMERCIAL
- INDUSTRIAL
- OTHER
- RESIDENTIAL
- Water Bodies
- Streams

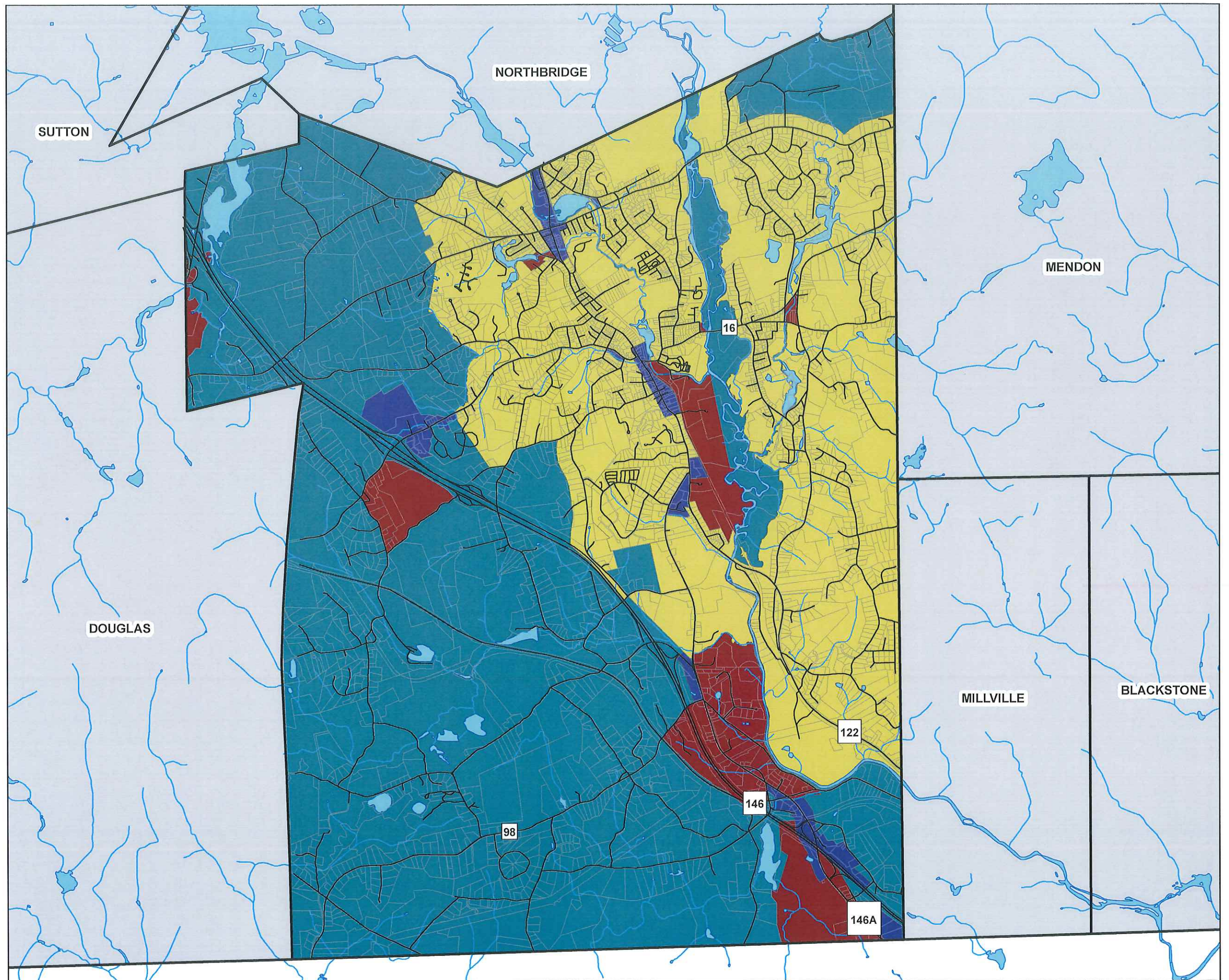


0 0.325 0.65 1.3 Miles

Information depicted on this map is for planning purposes only. This information is not adequate for legal boundary definition, regulatory interpretation, or parcel-level analysis. Use caution interpreting positional accuracy.

Produced by the Central Massachusetts Regional Planning Commission.
1 Mercantile Street, Suite 520, Worcester, MA 01608
Visit us on-line at - <http://www.cmrpc.org>

R:\Pre-Disaster Mitigation\MVP Date: 9/12/2018



**Municipal Vulnerability
Preparedness (MVP)
Workshop: Uxbridge**

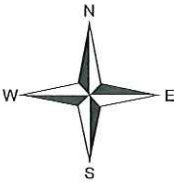
Reference Map:
Population Density

Legend

- Massachusetts Towns
- Roads
- Water Bodies
- Streams

Population (people/sq mile)

- 359
- 360 - 456
- 457 - 566
- 567 - 866
- 867 - 3991



0 0.325 0.65 1.3 Miles

Information depicted on this map is for planning purposes only. This information is not adequate for legal boundary definition, regulatory interpretation, or parcel-level analysis. Use caution interpreting positional accuracy.

Produced by the Central Massachusetts Regional Planning Commission.
1 Mercantile Street, Suite 520, Worcester, MA 01608
Visit us on-line at - <http://www.cmrpc.org>

R:\Pre-Disaster Mitigation\MVP

Date: 9/10/2018

