



Legend

- EXISTING BUILDING FOOTPRINT
- EXISTING TAFT ELEMENTARY SCHOOL
- PROPOSED NEW ADDITION
- PROPOSED NEW EARLY CHILDHOOD CENTER
- PROPOSED MODIFICATIONS

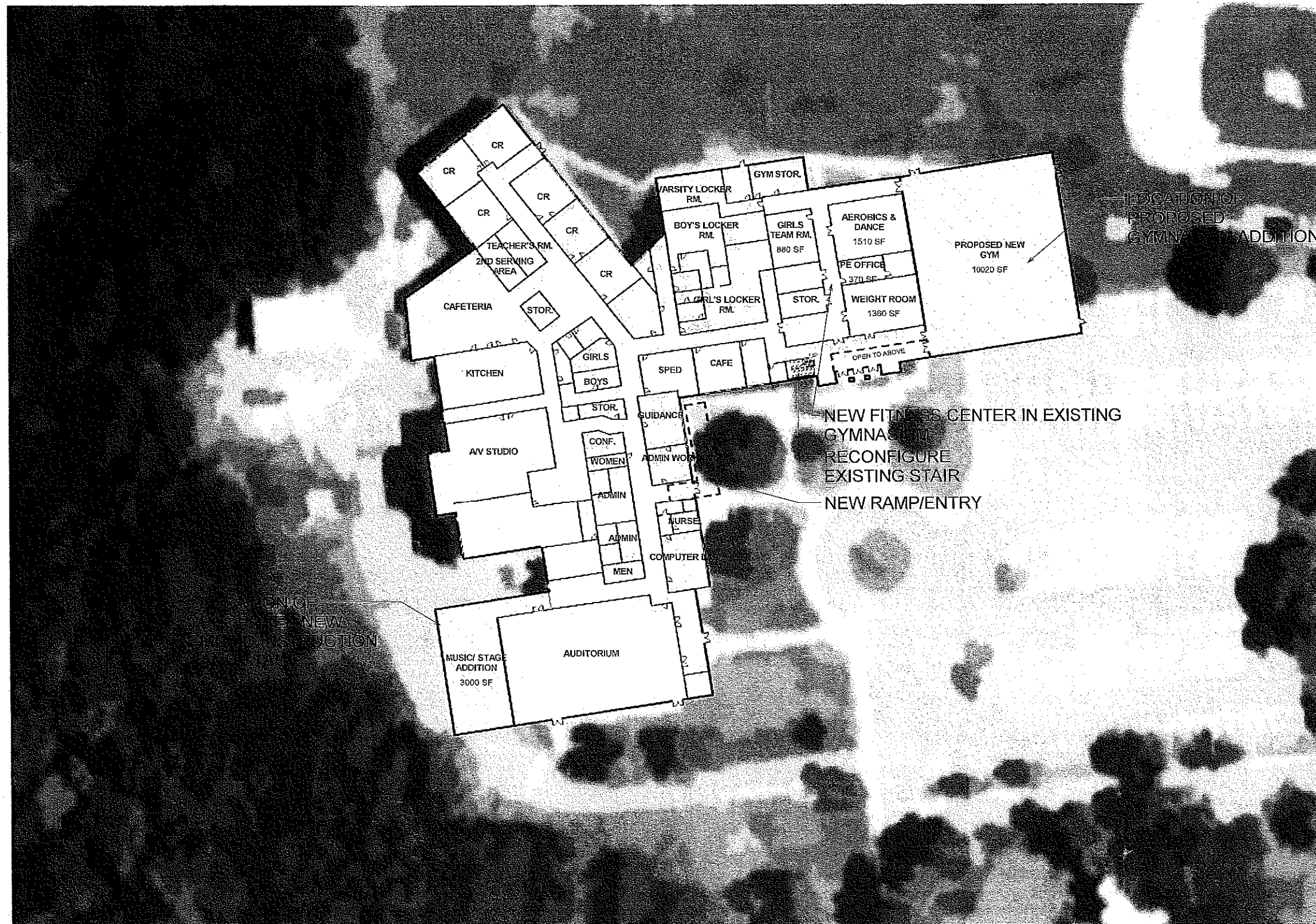
① SITE PLAN DIAGRAM
1" = 100'-0"

PROPOSED MODIFICATIONS TO UXBRIDGE HIGH SCHOOL SITE

STV INCORPORATED



2/26/2010 3:27:07 PM



Legend

- EXISTING BUILDING FOOTPRINT
- PROPOSED NEW ADDITION
- PROPOSED MODIFICATIONS

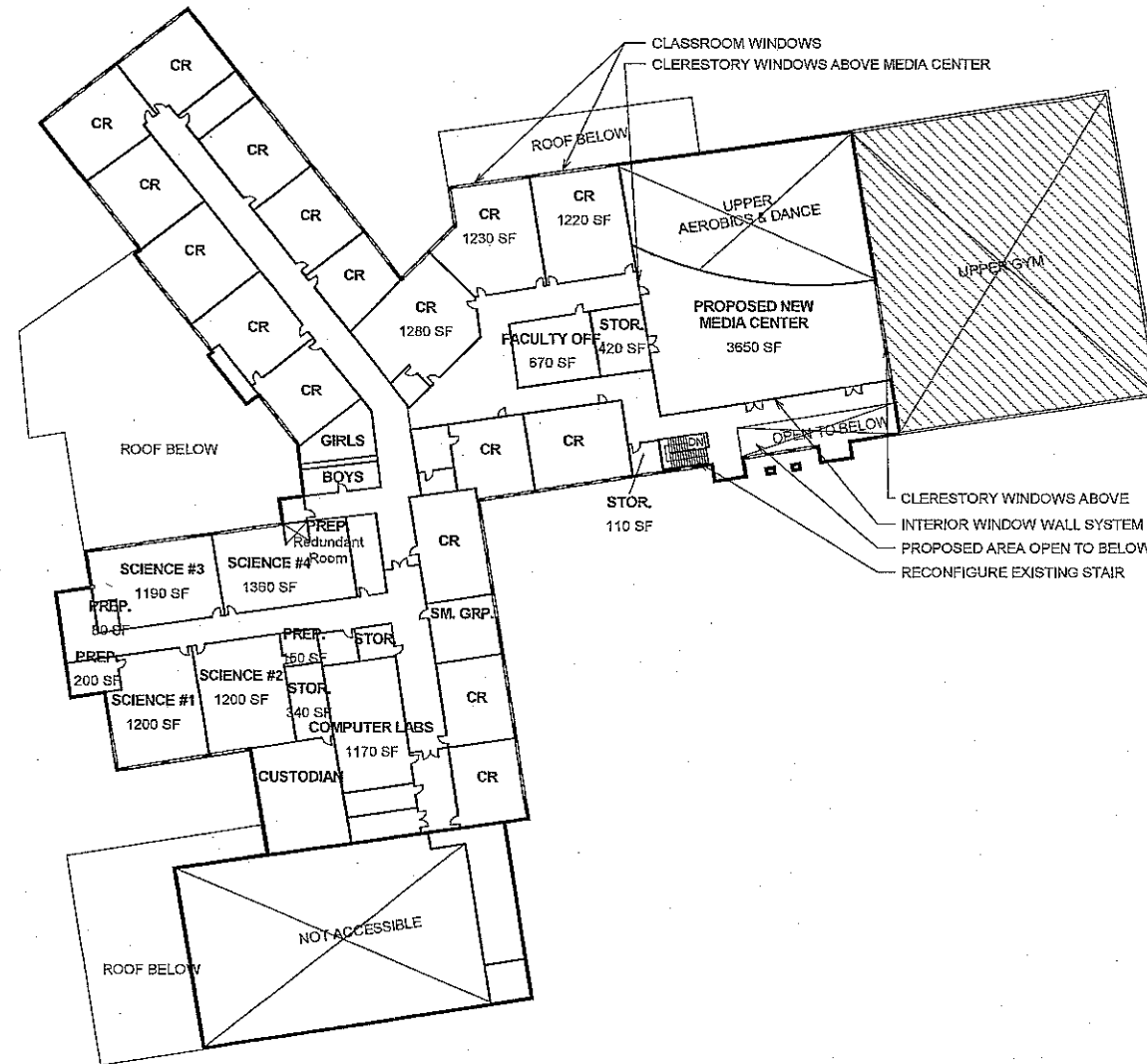
SITE PLAN - PROPOSED ADDITIONS AND
MODIFICATIONS
1" = 30'-0"

PROPOSED MODIFICATIONS TO UXBRIDGE HIGH SCHOOL SITE

STV INCORPORATED



2/28/2010 3:27:11 PM



① PROPOSED SECOND FLOOR PLAN
1" = 30'-0"

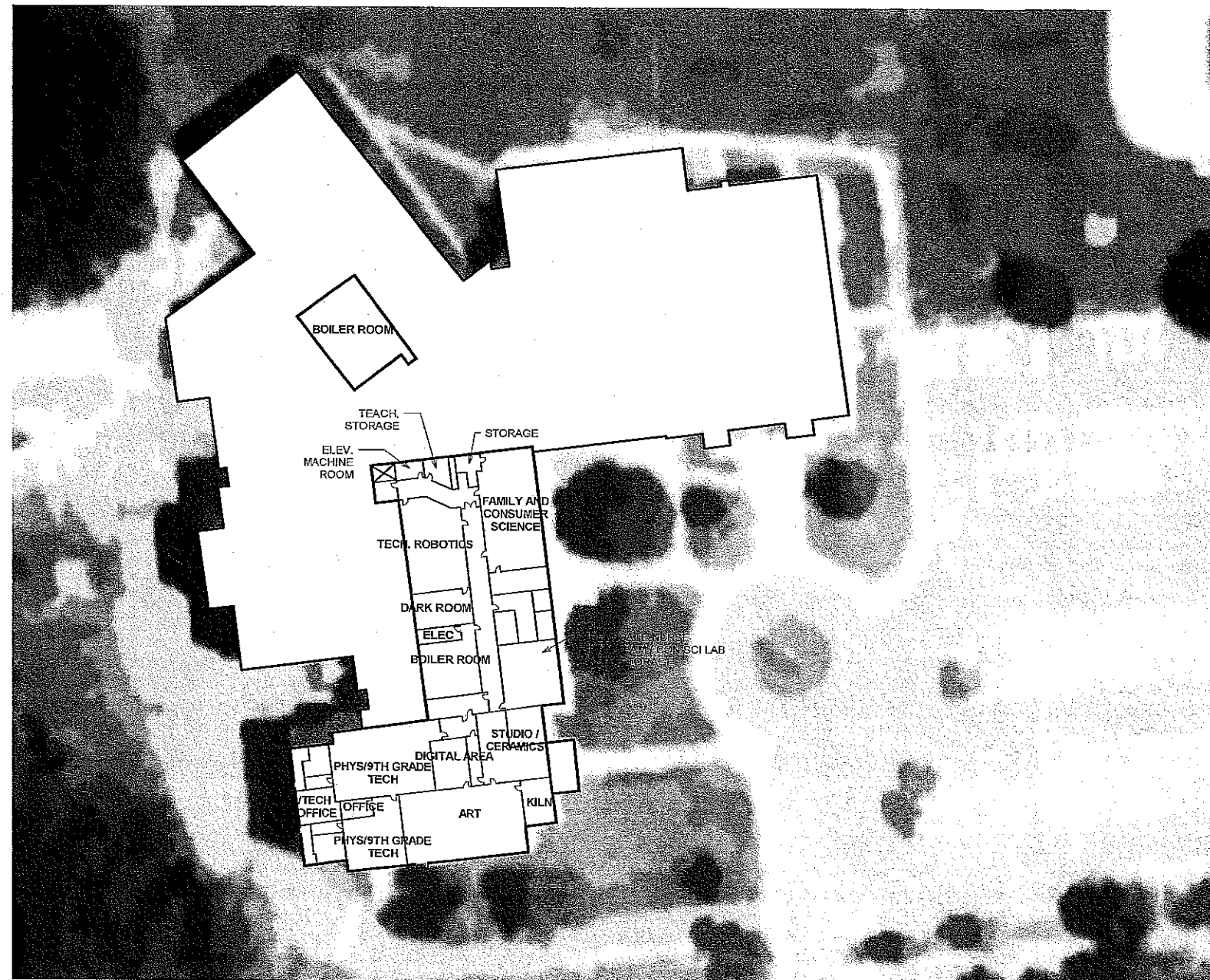
PROPOSED MODIFICATIONS TO UXBRIDGE HIGH SCHOOL SITE

Legend

- EXISTING BUILDING FOOTPRINT
- PROPOSED NEW ADDITION
- PROPOSED MODIFICATIONS

STV INCORPORATED





Legend

- EXISTING BUILDING FOOTPRINT
- PROPOSED MODIFICATIONS

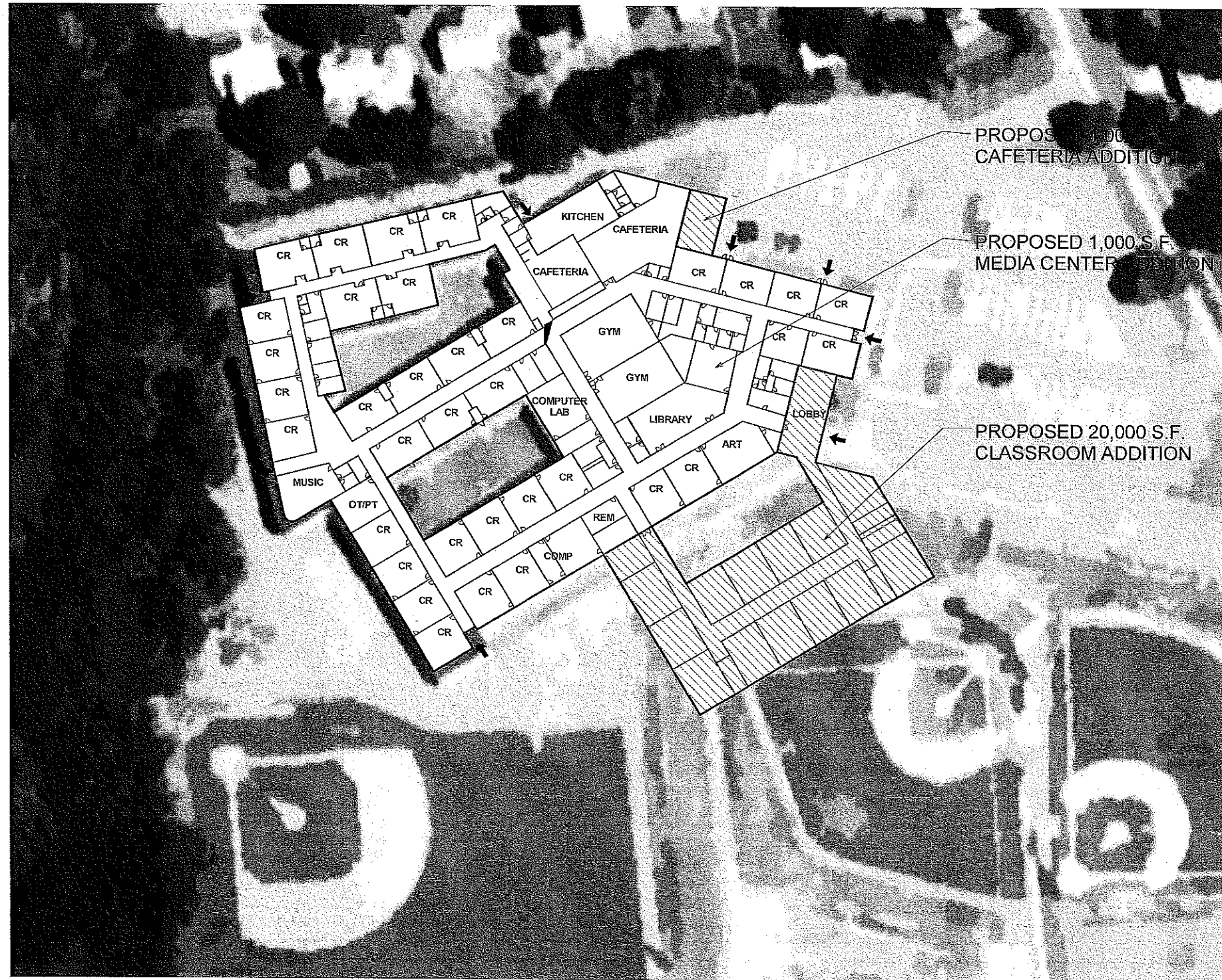
① PROPOSED GROUND FLOOR PLAN
1" = 30'-0"

PROPOSED MODIFICATIONS TO UXBRIDGE HIGH SCHOOL SITE

STV INCORPORATED



2/26/2010 3:42:34 PM



Legend

- EXISTING BUILDING FOOTPRINT
- PROPOSED NEW ADDITION
- PROPOSED MODIFICATIONS

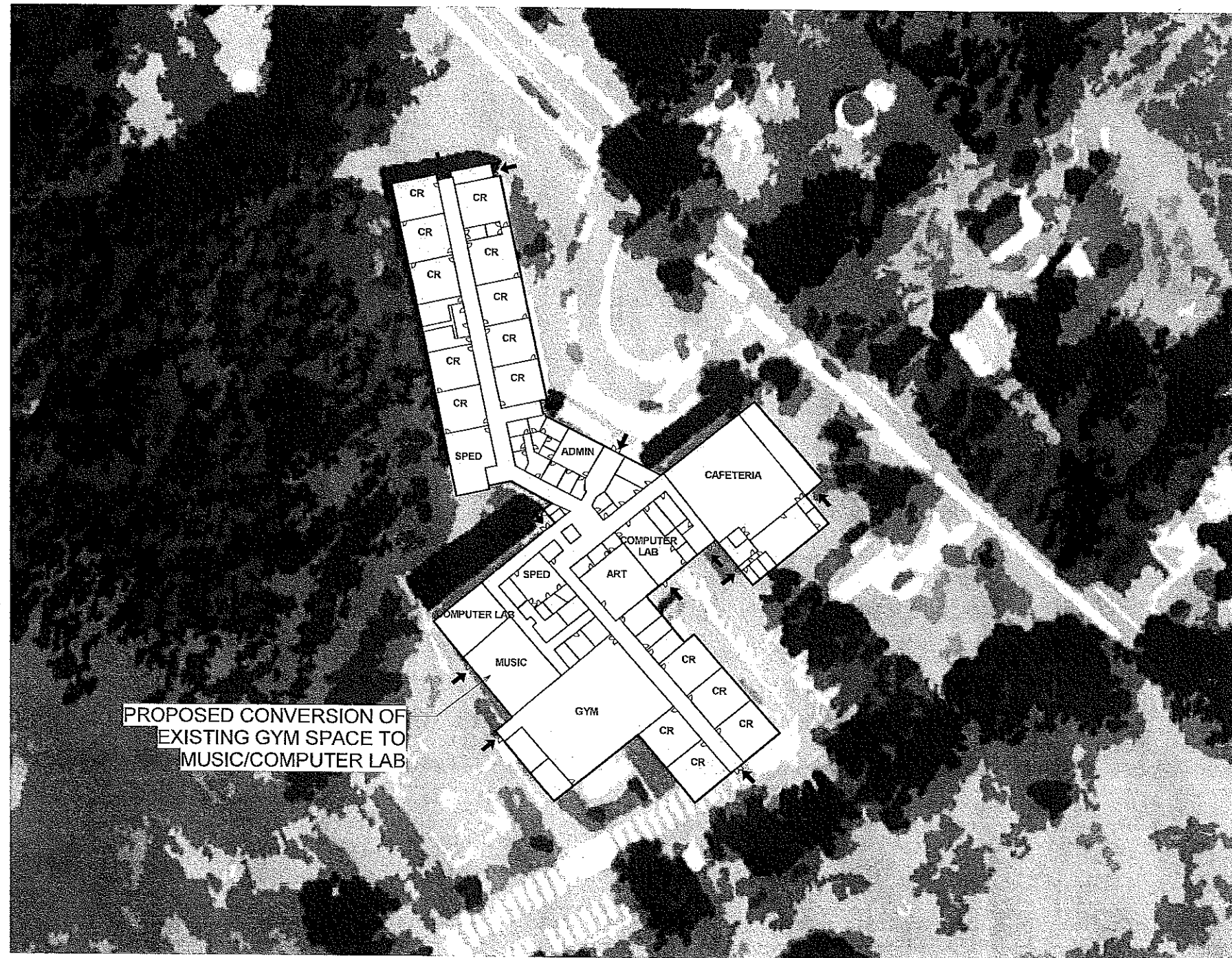
① SITE PLAN DIAGRAM
1" = 40'-0"

PROPOSED MODIFICATIONS TO TAFT ELEMENTARY SCHOOL SITE

STV INCORPORATED



2/25/2010 8:14:36 AM



Legend

- EXISTING BUILDING FOOTPRINT
- PROPOSED MODIFICATIONS

① SITE PLAN DIAGRAM
1" = 40'-0"

PROPOSED MODIFICATIONS TO WHITIN MIDDLE SCHOOL SITE

STV INCORPORATED



2/25/2010 8:56:35 AM