

TOWN OF UXBRIDGE

PLANNING BOARD and TREE WARDEN

UXBRIDGE, MASSACHUSETTS 01569

508-278-8600 (Planning Board) ♦ 508-278-8616 (DPW)

POSTED UXB TOWN CLERK
2019 SEP 18 AM 11:25

PUBLIC HEARING NOTICE

Notice is hereby given by the **Uxbridge Planning Board and Tree Warden** that a **Public Hearing** will be held on Wednesday, **October 9, 2019** at 7:00 p.m. in the Board of Selectmen Meeting Room, Uxbridge Town Hall, 21 South Main Street, Uxbridge, Massachusetts to review the following proposal pursuant to Massachusetts General Laws Title XIV Chapter 87 Section 3.

FY20-03TH, Scenic Road Authorization Application – The Owner of record, **TOWN OF UXBRIDGE**, and Applicant of record, **NATIONAL GRID**, in conjunction with **UXBRIDGE DPW**, are seeking approval for the **removal of 53 Town-owned trees, pruning of 8 Town-owned trees, pruning of limbs less than 8' in diameter extending inside the 8' clearance zone ground to sky of main power lines, and flat cutting and/or removal of tall-growing brush or tree species up to 8' in trunk diameter at chest height that are in the clearance zone 8' from either side of lines**, on designated Scenic Roads, **Henry Street & Chapin Street**, located in multiple zones. Any objections to this work must be submitted in writing to the Planning Board and Tree Warden/DPW, prior to or during the hearing. All comments shall be sent to: Tree Warden c/o Uxbridge Planning Board, 21 South Main Street, Uxbridge, MA 01569, Room 205.

Notice to appear in the Worcester Telegram & Gazette on Wednesday, September 25th & October 2nd. Copies of the proposals are on file and available for review at the Land Use/Planning & Zoning Office during regular business hours and will be posted on the Town Hall bulletin board which will include information regarding each tree.

Planning Board

Benn S. Sherman, PE, Director of Public Works/Tree Warden

cc: Town Clerk

Applicant/Representative

Abutters

Town Manager

Worcester Telegram & Gazette

Planning Board

Conservation Commission

Department of Public Works

Bldg. Dept.

Public Safety Committee

Ownership Key:
C/T = City or Town
M = Municipal

Town of Uxbridge (Scenic Road Trees)

nationalgrid

Town of Uxbridge												
National Grid EVM Program												
Scenic Road Trees												
Circuit #: 321W6												
Count	Site ID	Street Name	Pole #	House #	Location	Owner	Dia.	Species	# Stem	Defect Condition	Work Proposed	
1	PJ73	Henry St	9-10	Lot		T	42	Sycamore		Proximity	Remove	
2	PJ73	Henry St	10-11	Lot		M	14	Oak		Proximity	Remove	
3	PJ74	Henry St	10-11	74	AF	T	24	N. Maple		Base decay with FFB; many crown breaks; uprooting	Remove	
4	PJ73	Henry St	10-11	Lot		M	16	Oak		Proximity; trunk decay	Remove	
5	PJ73	Henry St	10-11	Lot		M	10	Pine		Proximity	Remove	
6	PJ73	Henry St	11-12	Lot		M	14	Pine		Base decay; lean	Remove	
7	PJ75	Henry St	11-12	78	AF	T	50	W. Oak		Proximity	Trim	
8	PJ73	Henry St	11-12	Lot		M	24	Pine		Proximity	Remove	
9	PJ73	Henry St	12-13	Lot		M	18	Pine		Proximity	Remove	
10	PJ73	Henry St	12-13	Lot		M	17	Pine		Proximity	Remove	
11	PJ73	Henry St	12-13	Lot		M	12	Pine		Proximity	Remove	
12	PJ73	Henry St	12-13	Lot		M	9	R. Maple		Proximity	Remove	
13	PJ76	Henry St	12-13	82	AF	T	36	W. Oak		Proximity and dead wood trim	Trim	
14	PJ85	Chapin St	1-2	16		T	35	Oak		Proximity/ root rot	Remove	
15	PJ85	Chapin St	1-2	16		T	40	Oak		Proximity	Remove	
16	PJ85	Chapin St	2-3	16		T	22	Oak		Proximity	Remove	
17	PJ85	Chapin St	2-3	16		T	23	Oak		Proximity	Remove	
18	PJ86	Chapin St	2-3	180 Blackstone St	AF	T	28	Pine		Large rotted cavity on base/ hollow base	Remove	
19	PJ85	Chapin St	2-3	16		T	23	W. Oak		Proximity	Remove	
20	PJ85	Chapin St	2-3	16		T	21	Oak		Proximity	Remove	

nationalgrid

2 of 4

Ownership Key:
C/T = City or Town
M = Municipal

Town of Uxbridge (Scenic Road Trees)

nationalgrid

Town of Uxbridge											
National Grid EVM Program											
Scenic Road Trees											
Circuit #: 321W6											
Count	Site ID	Street Name	Pole #	House #	Location	Owner	Dia.	Species	# Stem	Defect Condition	Work Proposed
40	PJ96	Chapin St	12-13	119		T	11	Hickory		Proximity/ discoloration at line height	Remove
41	PJ96	Chapin St	12-13	119		T	12	Hickory		Proximity	Remove
42	PJ96	Chapin St	12-13	119		T	15	Hickory		Proximity	Remove
43	PJ96	Chapin St	12-13	119		T	40	Oak		Proximity	Remove
44	PJ96	Chapin St	13-14	119		T	9	Oak		Proximity	Remove
45	PJ96	Chapin St	13-14	119		T	15	Cherry		Proximity	Remove
46	PJ96	Chapin St	13-14	119		T	45	Catalpa		Light trim	Trim
47	PJ98	Chapin St	14-15	137		T	20	Hickory		Proximity	Remove
										Proximity/ base decay/ dead leads	Remove
48	PJ98	Chapin St	14-15	137		T	20	Hickory			Remove
										Proximity/ crown decline/ dead leads/ internal decay	Remove
49	PJ101	Chapin St	15.50	160	AF	T	40	Oak		Lean/ on slope/ base cavity/ internal decay	Remove
										Proximity/ cavity at base/ hollow base/ internal decay	Remove
50	PJ101	Chapin St	15.50-16	160	AF	T	16	Hickory			Remove
										Proximity/ large cavity 10' up/ burning	Remove
51	PJ103T	Chapin St	17-17.50	Lot		T	30	Hickory			Remove
										Proximity/ burning/ rotted old branch collar	Remove
52	PJ103T	Chapin St	17.50-18	Lot		T	16	Hickory			Remove
										Proximity/ burning	Remove
53	PJ103T	Chapin St	17.50-18	Lot		T	19	Hickory			Remove
54	PJ103T	Chapin St	17.50-18	Lot		T	18	Oak		Shave line side	Trim
55	PJ103T	Chapin St	18-19	Lot		T	12	Hickory		Proximity/ dead	Remove
56	PJ103T	Chapin St	18-19	Lot		T	24	Oak		Proximity/ large rotted crack at base/ internal decay	Remove
											Remove
57	PJ103T	Chapin St	18-19	Lot		T	12	Hickory			Remove
58	PJ105	Chapin St	19-20	195		T	23	Oak		Proximity	Remove

nationalgrid

4 of 4

TOWN RESOURCES

[Phone Directory](#)
[Reports & Budgets](#)
[Charter & Bylaws](#)
[Town Meeting](#)
[Town Calendar](#)
[Minutes & Agendas](#)
[Local Events](#)

QUICK LINKS

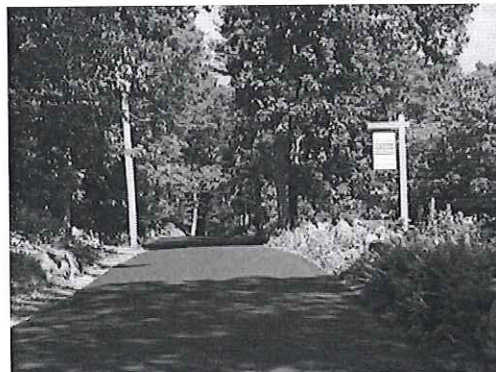
[Donations](#)
[Library](#)
[Public Schools](#)
[GIS Maps](#)
[Cable Access](#)
[Subscribe to E-Alerts](#)
[Employment & Volunteer](#)
[Zoning Map](#)
[Records Access Officer](#)



Scenic Roads

[Printer-Friendly Version](#)

Contact: [Department of Public Works Administration](#)
Address: 147 Hecla Street
 Uxbridge, MA 01569
Phone: 508-278-8616
Fax: 508-278-3179



Chapin Street near Cormier Woods

SCENIC ROADS

The purpose of this page is to introduce Uxbridge's residents to the Scenic Roads in town and to provide information on how our roads are protected so that we can preserve their scenic qualities.

Purpose

Information on Scenic Roads can be found in the Massachusetts General Laws Chapter 40, Section 15C. Scenic Roads are permitted under Massachusetts General Law Chapter 40, Section 15C. In the late 80's and early 90's the Town designated 6 different roads, approximately 7 1/4 miles total, as scenic. In the spring of 2015, the Town designated 2 additional roads to make the total length of scenic roads 10.61 miles (see the scenic roads map).

Designation

Scenic roads are designated by a majority vote of the town meeting after being recommended or requested by the Planning Board, Conservation Commission, or Historical Commission. No numbered route or state highway can be designated as a scenic road unless the road is entirely within Uxbridge and no part of it is owned or maintained by the state.

Application

Currently there is no application form for the cutting or removal of trees or tearing down or destruction of stone walls on scenic roads. A letter to the Tree Warden with a copy to the Planning Board requesting and detailing such actions, together with a plan showing where such actions are proposed, are all that is necessary. The cost of the advertisements for the public hearing must be borne by the applicant.

Hearing

On any road, which has been designated a "Scenic Road," no repair, maintenance, or reconstruction that involves any cutting or removal of trees, or tearing down or destruction of stone walls, can occur without the prior written consent of the Planning Board. This written consent cannot occur until after the Planning Board has held a public hearing.

Since all trees subject to this law are also subject to the "Shade Trees" law (MGL Ch. 87), all public hearings under the Scenic Roads law for trees (not those for stone walls only) must be conducted as joint public hearings held in accordance with the requirements of the Shade Trees law. Thus, the hearing must be called by the Uxbridge Tree Warden and the notice of the time and place of the hearing must appear in two or more public places in Uxbridge and in a general circulation newspaper in the town once in each of two successive weeks, the first appearance to be not less than seven days before the day of the hearing, and the notice must identify the size, type, and location (in a manner commonly understood by the a non-technical person) of each tree.

Decision

After the public hearing the Planning Board will vote either to deny or allow the actions requested, based on its judgment of the relative scenic value and impacts of the actions. The result of this vote will be transmitted in writing to the applicant.


[Click Here](#) for the Scenic Roads Map

Roadways Designated as Scenic Roads

Road Name	Description	Length	Date Approved
Chapin Street	Blackstone St. to Mendon Town Line	0.96 miles	06/23/1986
Chestnut Street	Elmwood Ave. to Aldrich St. (Rt. 98)	1.15 Miles	05/14/1991
Elmwood Avenue	South St. & Chestnut St. to Glendale St.	1.64 miles	05/14/1991
Henry Street	Mendon St. (Rt. 16) to Mendon Town Line	1.15 miles	05/14/1991
South Street	Elmwood Ave./Chestnut St. to Rhode Island	0.91 miles	05/14/1991
West River Road	Mendon St. (Rt. 16) to East Hartford Ave.	1.42 miles	12/08/1986
Laurel Street	Chocolog Rd. to West St.	0.65 miles	05/12/2015
Chocolog Road	Mill St. to Douglas Town Line	2.73 miles	05/12/2015
Total Mileage		10.61 miles	

Town of Uxbridge, 21 South Main Street, Uxbridge, MA 01569
Phone: (508) 278-8600

[Website Disclaimer](#)
[Virtual Towns & Schools Website](#)



THE 189TH GENERAL COURT OF
THE COMMONWEALTH OF MASSACHUSETTS

[Home](#) [Glossary](#) [FAQs](#)

[Options](#)

[Massachusetts Laws](#)
[Bills](#)
[State Budget](#)
[People](#)
[Committees](#)
[Reports](#)
[Educate & Engage](#)
[Events](#)
[MyLegislature](#)

[Home](#)
[Bills & Laws](#)
[Laws](#)
[General Laws](#)
[PART I](#)
[TITLE XIV](#)
[CHAPTER 87](#)
[Section 3](#)

Massachusetts Laws

Massachusetts Constitution

General Laws

Session Laws

Rules

General Laws

Print Page

PART I	ADMINISTRATION OF THE GOVERNMENT	NEXT
TITLE XIV	PUBLIC WAYS AND WORKS	PREV NEXT
CHAPTER 87	SHADE TREES	PREV NEXT
Section 3	Cutting of public shade trees; public hearing; damages to fee owner	PREV NEXT

Section 3. Except as provided by section five, public shade trees shall not be cut, trimmed or removed, in whole or in part, by any person other than the tree warden or his deputy, even if he be the owner of the fee in the land on which such tree is situated, except upon a permit in writing from said tree warden, nor shall they be cut down or removed by the tree warden or his deputy or other person without a public hearing and said tree warden or his deputy shall cause a notice of the time and place of such hearing thereof, which shall identify the size, type and location of the shade tree or trees to be cut down or removed, to be posted in two or more public places in the town and upon the tree at least seven days before such hearing and published in a newspaper of general circulation in the city or town once in each of two successive weeks, the first publication to be not less than seven days before the day of the hearing or if no such local newspaper exists then in accordance with the provisions of section six of chapter four; provided, however, that when a public hearing must be held under the provisions of this section and under section fifteen C of chapter forty prior to the cutting or removal of a tree, such hearings shall be consolidated into a single public hearing before the tree warden and the planning board, or if there is no planning board, the selectmen of a town or the city council of a city, and notice of such consolidated public hearing shall be given by the tree warden or his deputy as provided herein. Any person injured in his property by the action of the officers in charge of the public shade trees as to the trimming, cutting, removal or retention of any such tree, or as to the amount awarded to him for the same, may recover the damages, if any, which he has sustained, from the town under chapter seventy-nine.

[Show / Hide Site Map](#)

Commonwealth of Massachusetts
Town of Uxbridge

**Benn Sherman
Tree Warden**

Public Shade Tree Removal Permit

This Shade Tree Removal Permit is hereby issued in accordance with Massachusetts General Laws, Chapter 87, Public Shade Tree Law, Section 3 (Cutting of Public Shade Trees; Hearing; Damages). The applicant is National Grid, Hazard Tree Mitigation Program, c/o Joan Callahan, 939 Southbridge Street, Worcester, MA 01610.

The program included a tree-by-tree hazard assessment of the main three-phase lines in Uxbridge. Town-owned trees that are hazardous and/or prone to failure, pose a threat to public safety and endanger the reliability of the main distribution lines along these routes, were identified for removal or pruning to reduce or eliminate their risk of failure.

Fifty three (53) town-owned trees were identified by National Grid arborists for removal and eight (8) for pruning.

I hereby grant permission to National Grid to remove or prune trees per specific list attached to this permit.

APPROVAL:

DRAFT

Benn S. Sherman, PE
Director of Public Works
Tree Warden

Date _____

Commonwealth of Massachusetts
Town of Uxbridge

**Benn Sherman
Tree Warden**

Brush Removal Permit

This Brush Removal Permit is hereby issued in accordance with Massachusetts General Laws, Chapter 87, Public Shade Tree Law, Section 5 (Cutting down, trimming or removing bushes and small trees). The applicant is National Grid, Hazard Tree Mitigation Program, c/o Joan Callahan, 939 Southbridge Street, Worcester, MA 01610.

The brush and small tree removal spec for the project is as follows:

Pruning – limbs less than 8 inches in diameter – limbs extending inside the 8 foot clearance zone ground to sky of the main power lines will be cut back at a main branching point or at the trunk, a minimum of 8 feet from the wires.

Flat cutting – tall-growing brush or tree species up to 8 inches in trunk diameter at chest height will be removed at ground level in the clearance zone 8 feet from either side of the lines.

I hereby grant permission to National Grid to remove tall-growing brush or tree species along the main line on town property along the roads of the attached map.

APPROVAL:

Benn S. Sherman, PE
Director of Public Works
Tree Warden

DRAFT

Date _____

Chapin St & Henry St

UXBRIDGE 95

