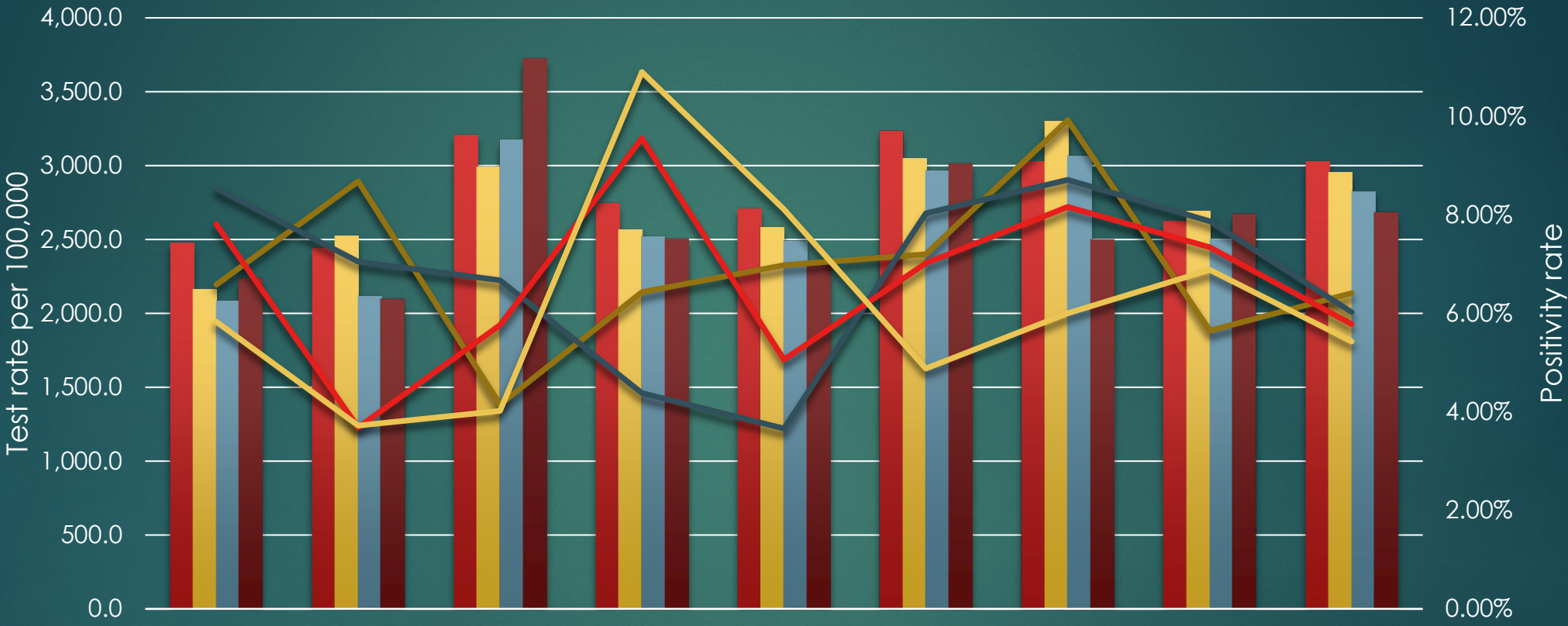


# COVID IN BVPPH TESTING AND POSITIVITY RATE NOVEMBER



■ Test rate 11/3   
 ■ Test rate 11/10   
 ■ Test rate 11/17   
 ■ Test rate 11/24  
— Pos rate 11/3   
 — Pos rate 11/10   
 — Pos rate 11/17   
 — Pos rate 11/24